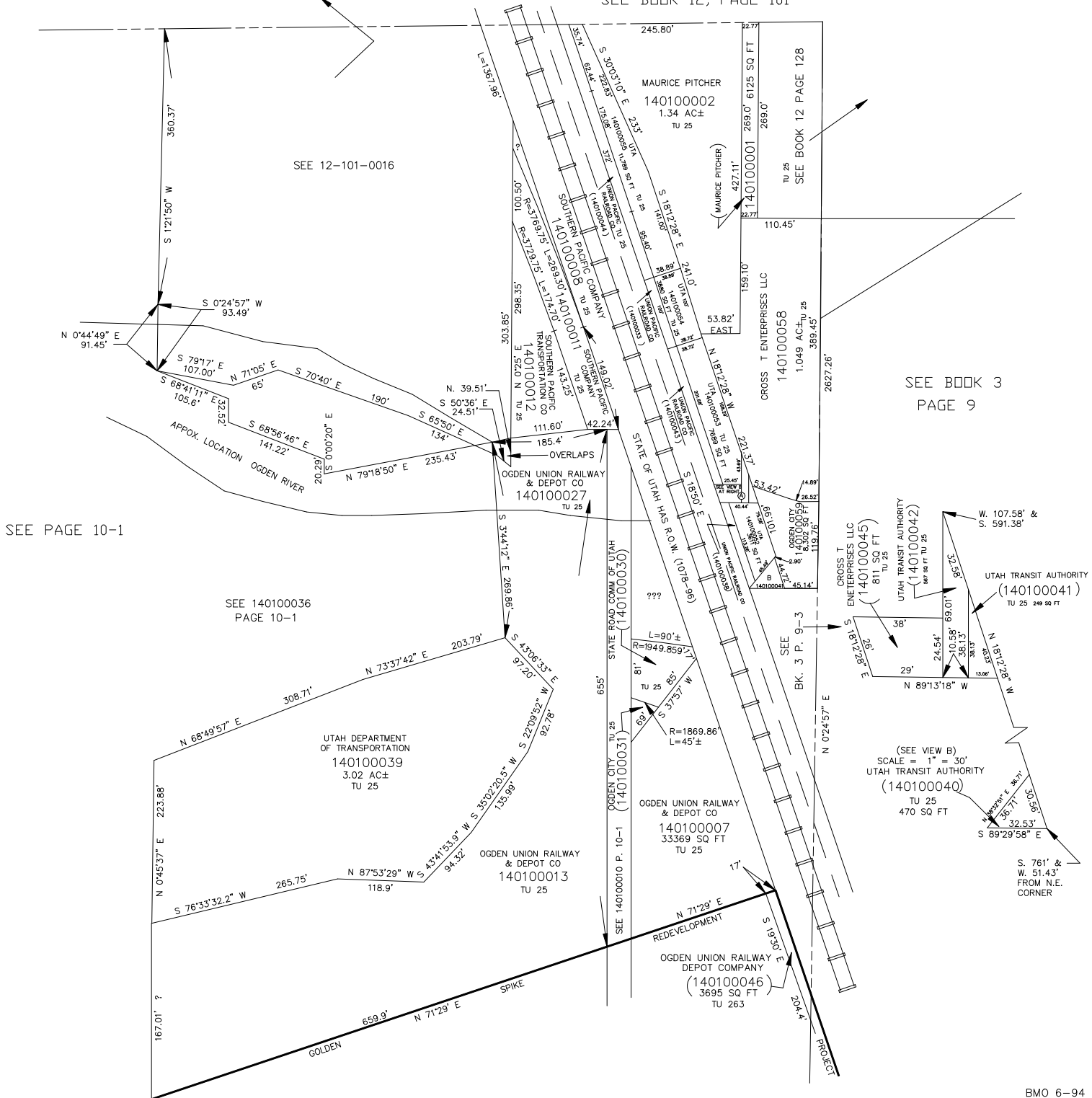


PART OF THE N.E. 1/4
SECTION 30, T.6N., R.1W., S.L.B. & M.

IN OGDEN CITY
SCALE 1" = 100'
SEE BOOK 12, PAGE 101

TAXING UNIT: 25, 263



SEE 12-101-0016

SEE PAGE 10-1

SEE 140100036
PAGE 10-1

SEE BOOK 3
PAGE 9

